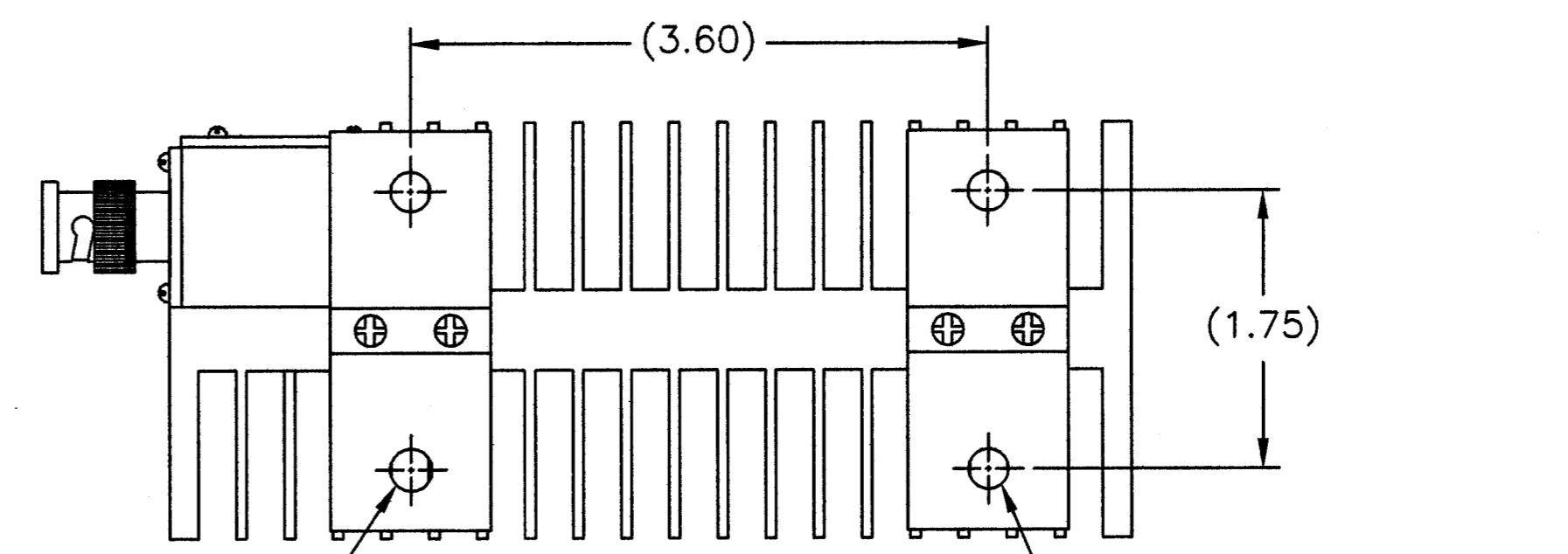
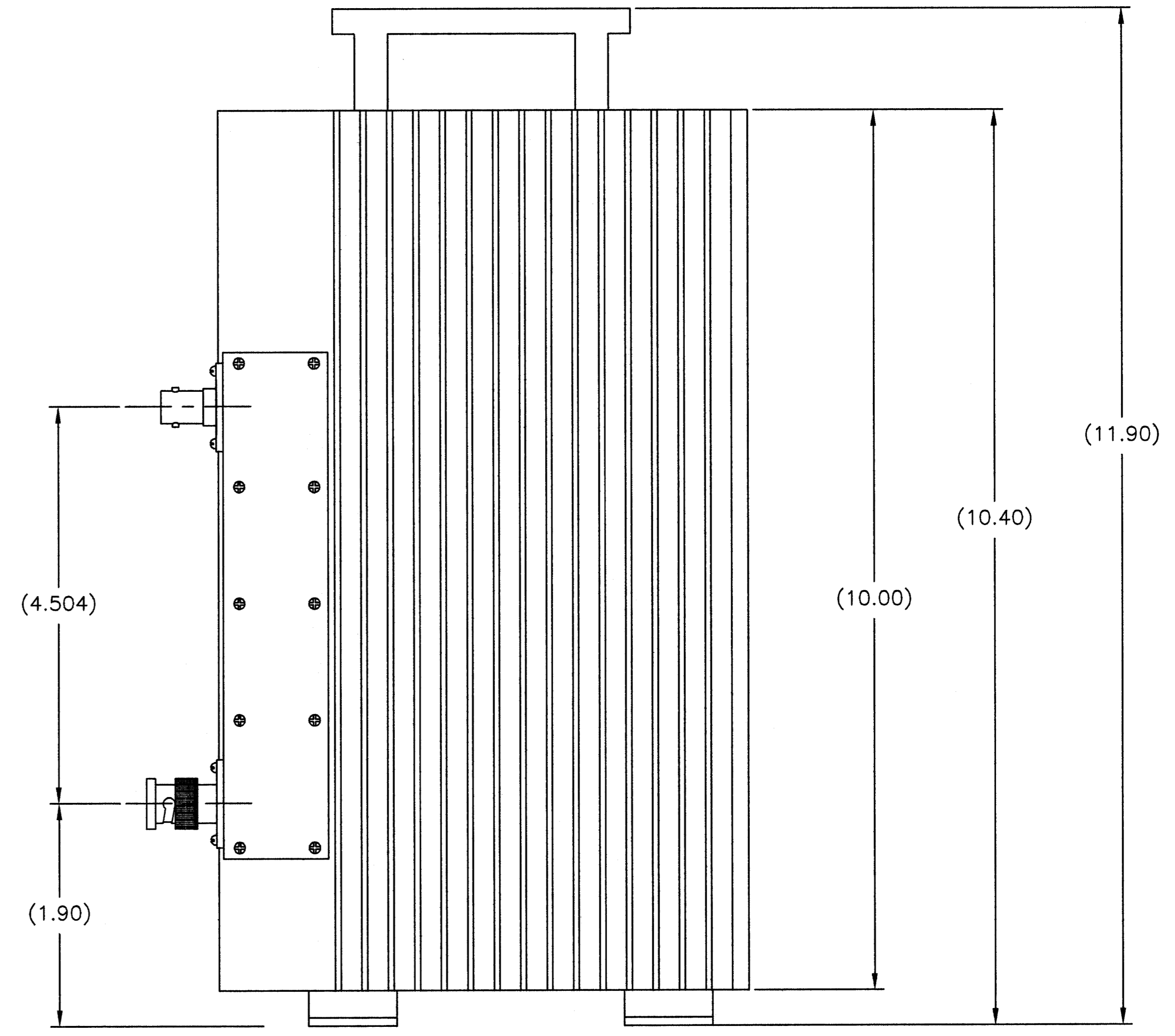
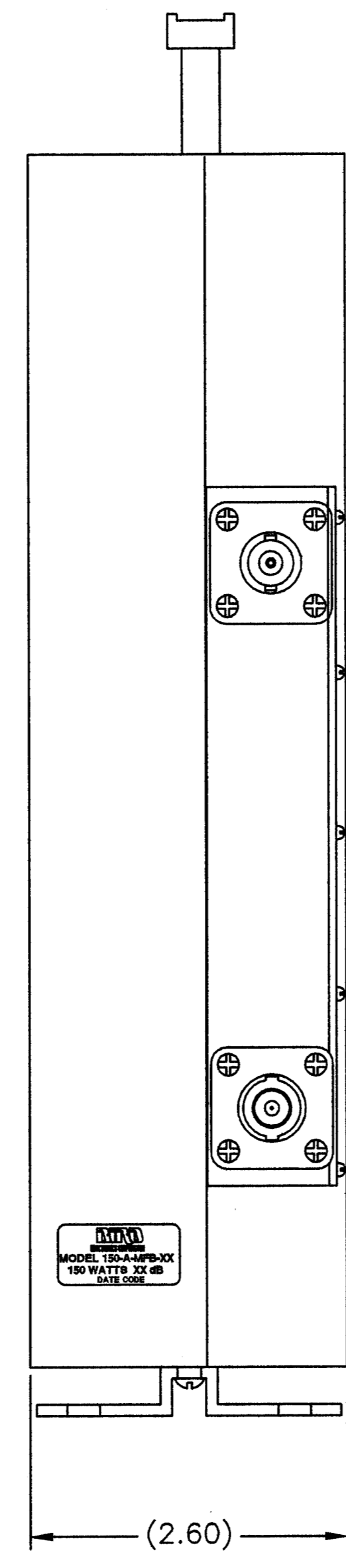
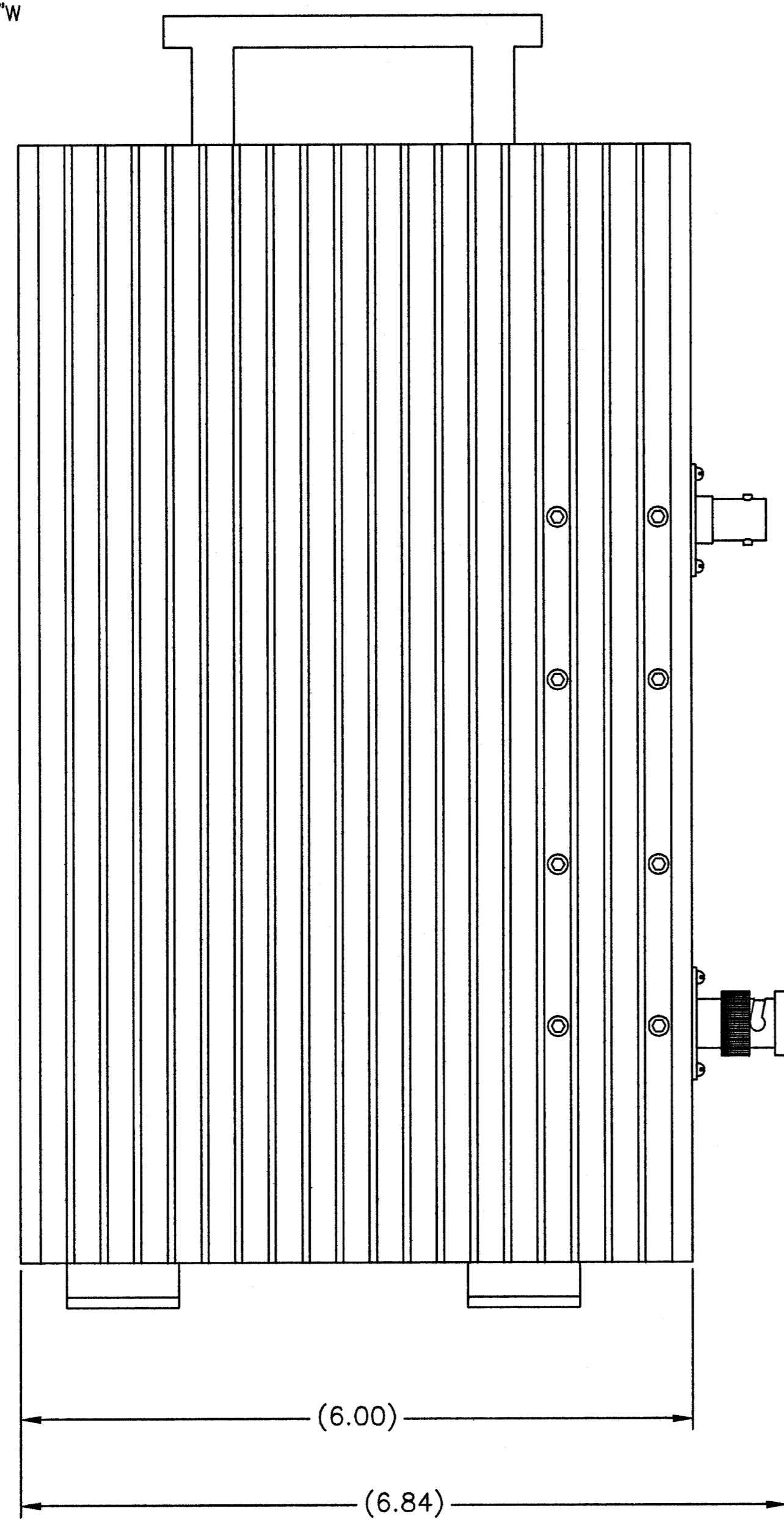


SPECIFICATIONS:  
 POWER RATING: 150 WATT MAX. @ 40°C. (BI-DIRECTIONAL)  
 180 WATTS MAX. @ 25°C.  
 FREQUENCY RANGE & VSWR:  
 DC TO 1GHz AT 1.10:1 MAX.  
 1GHz TO 2.4GHz AT 1.25:1 MAX.  
 CONNECTORS: BNC MALE/FEMALE, SILVER OR TRI-ALLOY PLATED  
 DRY LOAD: CONVECTION COOLED  
 NOMINAL SIZE: APPROX. 11.90"H X 6.84"L X 2.60"W  
 WEIGHT: APPROX. 6.6 LBS.

REVISIONS				
ZONE	REV	DESCRIPTION	DATE	APPROVED
A		ECN #0264	9-14-00	ma/



OTHER MOUNTING PATTERNS AVAILABLE ON SPECIAL REQUEST  
 4x 1/4" THRU HOLES

XX = DASH NUMBER (dB VALUE)

-30	30	±0.8 dB	±1.3 dB
-20	20	±0.5 dB	±1.0 dB
-10	10	±0.4 dB	±0.8 dB
-06	6	±0.4 dB	±0.6 dB
-03	3	±0.3 dB	±0.5 dB
-02	2	±0.3 dB	±0.5 dB
-01	1	±0.3 dB	±0.5 dB
DASH NO.	dB ATTN.	DC - 1GHz ATTENUATOR	1 - 2.4GHz ACCURACY ±dB

NOTE:  
 FOR VALUES NOT LISTED, REFER TO THE NEXT HIGHER ATTENUATION LEVEL FOR SPECIFICATIONS.  
 FOR ATTENUATION VALUES GREATER THAN THE HIGHEST LISTED ATTENUATION VALUE, REFER TO THE VALUE 1/2 THE DESIRED ATTENUATION LEVEL, THEN DOUBLE THE LISTED SPECIFICATION VALUES, UNLESS OTHERWISE SPECIFIED.

DIMENSIONS HEREON ARE FOR CUSTOMER CONVENIENCE AND REFERENCE ONLY. TOLERANCE TO BE APPLIED ONLY WHERE INDIVIDUALLY STATED ON THE RESPECTIVE DIMENSION. -DO NOT SCALE DRAWING-

UNLESS OTHERWISE SPECIFIED DIMENSIONS ARE IN INCHES TOLERANCES ARE: FRACTIONS DECIMALS ANGLES ± 1/64 .005 ± 0.010 ± 30'		MILLIMETERS .30 ± .4 .30 ± .12		THIS DRAWING IS THE PROPERTY OF THE BIRD ELECTRONIC CORPORATION. THE DESIGNS AND SPECIFICATIONS DISCLOSED HEREON ARE PROPRIETARY AND SHALL NOT BE REPRODUCED, NOR COPIED, NOR USED AS THE BASIS FOR THE MANUFACTURE OR SALE OF APPARATUS OR DEVICES WITHOUT THEIR EXPRESS WRITTEN CONSENT.	
MATERIAL		DRAWN D.M.RINK		DATE 2-20-03	
FINISH		CHECKED		APPROVALS	
SCALE 1:1		AUTOCAD		TITLE ATTENUATOR, CONVECTION COOLED BNC MALE/FEMALE, 150W	
SIZE D		FSCN NO. 70998		DWC. NO. 150-A-MFB-XX	
SHEET 1 OF 1		COMM CODE AT1		REV A	

DWC. NO. 150-A-MFB-XX A